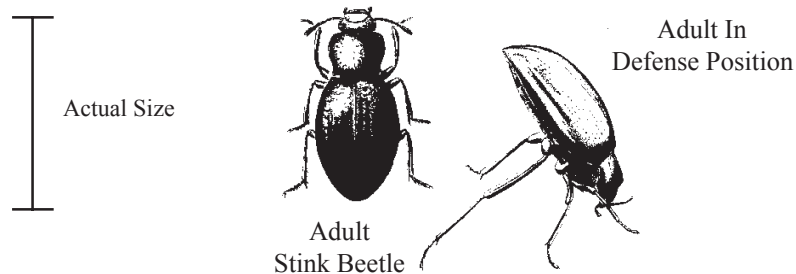


PEST CONTROL BULLETIN NO. 18

DARKLING AND PREDACEOUS GROUND BEETLES



GENERAL INFORMATION

Darkling ground beetles, *Tenebrionidae*, or predaceous ground beetles, *Carabidae*, occasionally enter homes and buildings from outdoors while seeking places to spend inactive periods. They are not harmful in the home, although offensive odors can be emitted by some species. These beetles are mostly black or dark brown and between 1/4 to 1/2 inch long, although they vary from 1/8 to an inch in length. Most of the inch long, black species that may be found about dwellings are the "stink beetles."

HABITS

These beetles are most active at night and are often attracted to lights to which they may fly. The darkling beetles that enter buildings feed mainly on dead or decaying vegetable matter. *The predaceous ground beetles feed on other insects and are considered beneficial.* Both types of beetles are found under clods and trash on the ground.

CONTROL

Eliminate debris, rubbish, and trash anywhere outside where the beetles hide, including vacant areas. Weather strip or seal off all openings and crevices in outer walls of buildings, including exposed doors and windows. Reducing exposed night lights is helpful if swarming occurs.

This information is provided to help homeowners with their pest problems. Insecticides may be purchased at nurseries, hardware, farm supply, and pet stores. If additional help is needed, contact with a registered pest control operator is suggested.

No endorsement of trade names or products is intended, nor is criticism implied of similar products not mentioned.

PRECAUTIONS

1. Handle insecticides with care and follow instructions on the label.
2. Do not use around open flame or exposed foods, and always clean food preparation areas after the use of pesticides.
3. Store out of reach of children and pets, preferably in locked cabinets.
4. Never keep pesticides in anything other than the original container.
5. Never reuse the pesticide container to store any other materials.
6. Dispose of all empty containers properly by placing them in the trash can for removal to the local disposal area.



ORANGE COUNTY VECTOR CONTROL DISTRICT
13001 Garden Grove Boulevard, Garden Grove, CA 92843
(714) 971-2421 • (949) 654-2421

Please Visit Our Web Site www.ocvcd.org