

Orange County Mosquito and Vector Control District

For Immediate Release
Wednesday, August 29, 2018



Contact:
Mary-Joy Coburn, Public Affairs Coordinator
Phone: (714) 971-2421
Fax: (714) 971-3940
E-mail: mjcoburn@ocvector.org

Increased Activity of Invasive *Aedes* Mosquitoes in Orange County

Garden Grove, CA. The end of summer may be approaching, but invasive *Aedes* mosquito activity continues to increase in Orange County. In the past month the Orange County Mosquito and Vector Control District (OCMVCD) confirmed 26 new infestation locations, an increase of 3,000 acres of infestation in the county from 22,000 to 25,000 acres. The most recent detections were confirmed this week in the cities of Tustin and San Clemente. Since the first collection in Mission Viejo in 2015, there have been a total of 92 infestation areas in 23 cities and two unincorporated locations.

These non-native and aggressive day-biting mosquitoes are black and white and lay their eggs along the waterline of containers as small as a bottle cap. The mosquitoes known as *Aedes aegypti* (yellow fever mosquito), *Aedes albopictus* (Asian tiger mosquito), and *Aedes notoscriptus* (Australian backyard mosquito) are capable of transmitting debilitating viruses including dengue, chikungunya, yellow fever, and Zika. While these viruses are not currently transmitted locally, transmission could begin if someone infected abroad returns to Orange County and is bit by the invasive mosquito. These mosquitoes are also known to cause dog heartworm to dogs and cats. Vector Control officials are urging residents to take the necessary precautions to reduce mosquito breeding and to avoid bites from these aggressive ankle-biters.

Once an introduction of these invasive *Aedes* mosquitoes has occurred, residents moving materials (potted plants, plant cuttings, buckets, containers, etc.) from infested areas to non-infested areas may facilitate their spread.

“Mosquitoes are very active in our communities and OCMVCD has been receiving a high volume of mosquito service request calls,” said Mary-Joy Coburn, Public Affairs Coordinator. “Residents must do their part to check their yard regularly and eliminate standing water or water-holding containers.”

Residents should take the following precautions to help reduce the chances of being bit by mosquitoes:

- Dump and drain any containers filled with water at least once a week

- Clean and scrub bird baths and pet water bowls weekly
- Dump water from potted plant saucers
- Do not transport or share plant stems rooted in water
- Drill a hole or puncture containers to eliminate standing water

To prevent mosquito bites, the District offers the following tips:

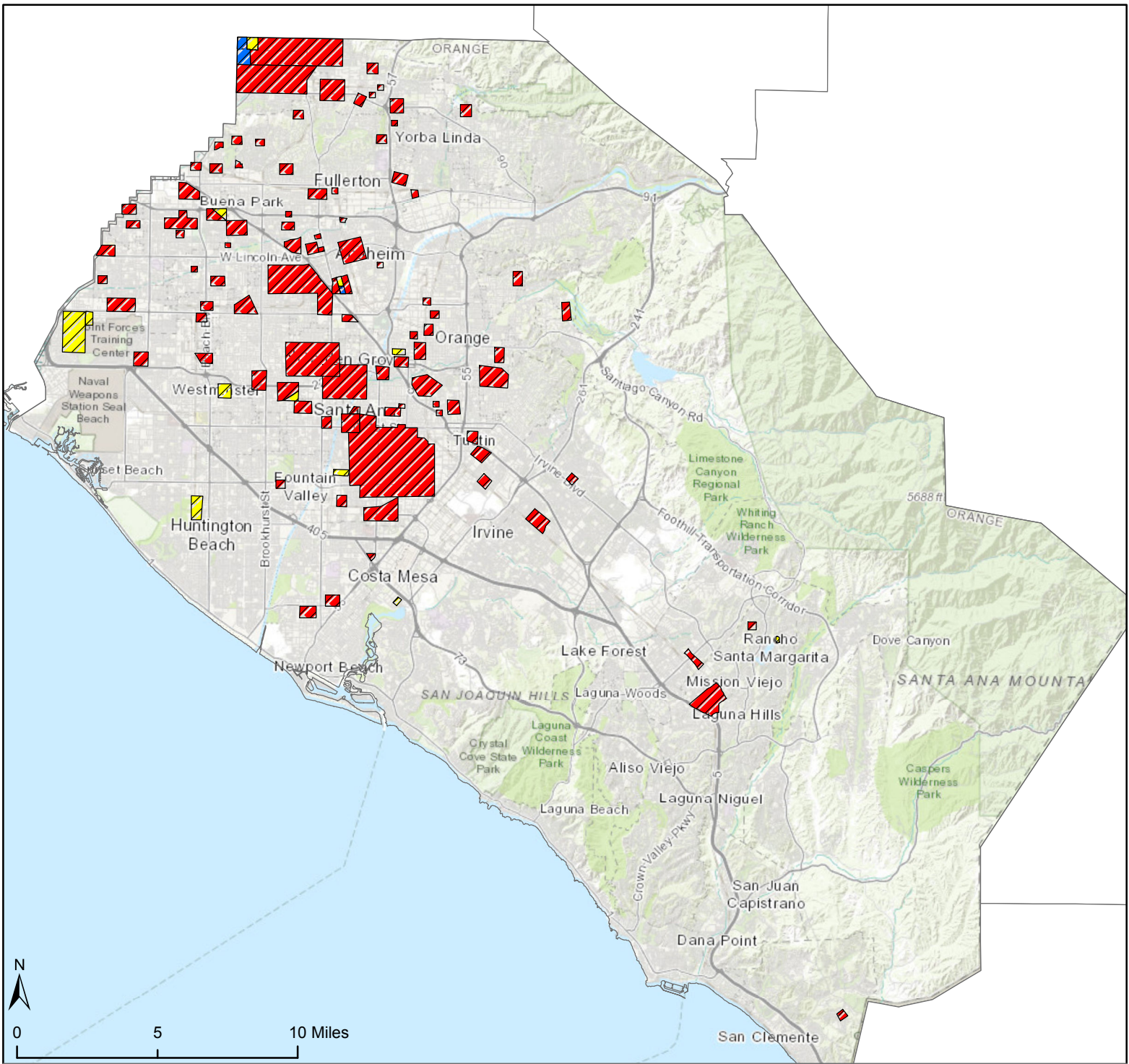
- Apply mosquito repellents to exposed skin before going outdoors; reapply as recommended
- Wear repellent containing DEET®, Picaridin, IR3535, or oil of lemon eucalyptus
- Close all unscreened doors and windows to prevent mosquitoes from entering your home or space; repair broken or damaged screens
- Wear long-sleeved shirts and long pants, and opt for lighter-colored clothing

The invasive *Aedes* mosquitoes have been detected in the cities of Anaheim, Brea, Buena Park, Costa Mesa, Cypress, Fountain Valley, Fullerton, Garden Grove, Huntington Beach, Irvine, La Habra, La Palma, Lake Forest, Los Alamitos, Mission Viejo, Newport Beach, North Tustin, Orange, Placentia, Rossmoor, San Clemente, Santa Ana, Stanton, Tustin, and Yorba Linda.

Vector Control is a shared responsibility. Orange County residents are urged to inspect around their property for possible mosquito breeding sources and to educate their neighbors to help keep their neighborhoods mosquito-free.

Visit ocvector.org to learn more about what you can do.

###




**Aedes Infestation
Countywide Infestation Areas
Orange County, CA
August 21, 2018**




**-92 Total Infestation Areas
-23 Cities and 2 Uninc. Locations**


Invasive Aedes Locations

Ae. albopictus 

- Anaheim
- Buena Park
- Huntington Beach
- La Habra
- Los Alamitos
- Mission Viejo
- Newport Beach
- Orange
- Rossmoor*
- Santa Ana
- Garden Grove

Ae. aegypti 

- Anaheim
- Brea
- Buena Park
- Costa Mesa
- Cypress
- Fountain Valley
- Fullerton
- Garden Grove
- Irvine
- La Habra
- La Palma
- Lake Forest
- Mission Viejo
- Orange

Ae. notoscriptus 

- Placentia
- San Clemente
- Santa Ana
- Stanton
- Tustin
- North Tustin*
- Yorba Linda

*Unincorporated

